

PEMETAAN PULAU-PULAU KECIL TERLUAR

(Metode Alternatif UAV-Based Mapping)

LAPORAN HASIL PROSES Fotogrametri Digital

Seluruh hitungan triangulasi udara menghasilkan presisi < 2.5 piksel = $< 0.38m$

Survey Data

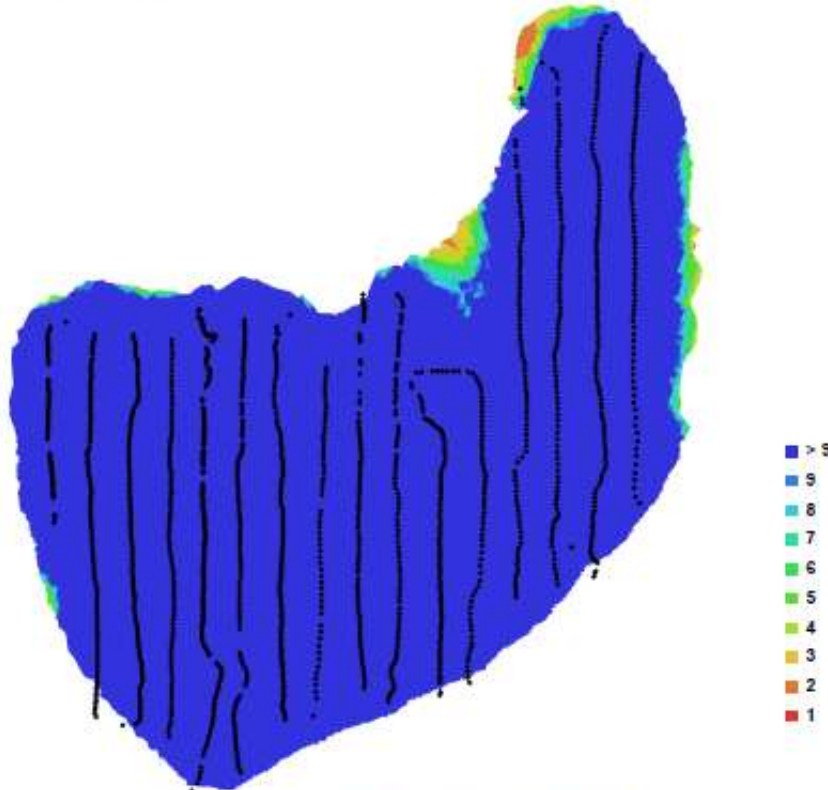


Fig. 1. Camera locations and image overlap.

Number of images:	1625	Camera stations:	1625
Flying altitude:	625.129 m	Tie-points:	413476
Ground resolution:	0.149684 m/pix	Projections:	1782633
Coverage area:	17.9751 sq km	Error:	1.63732 pix

x ukuran 1 piksel CCD = 2.9mikron

Camera Model	Resolution	Focal Length	Precalibrated
DMC-TZ10	4000 x 3000	4.1 mm	EXIF

Table. 1. Cameras.

Ground Control Points



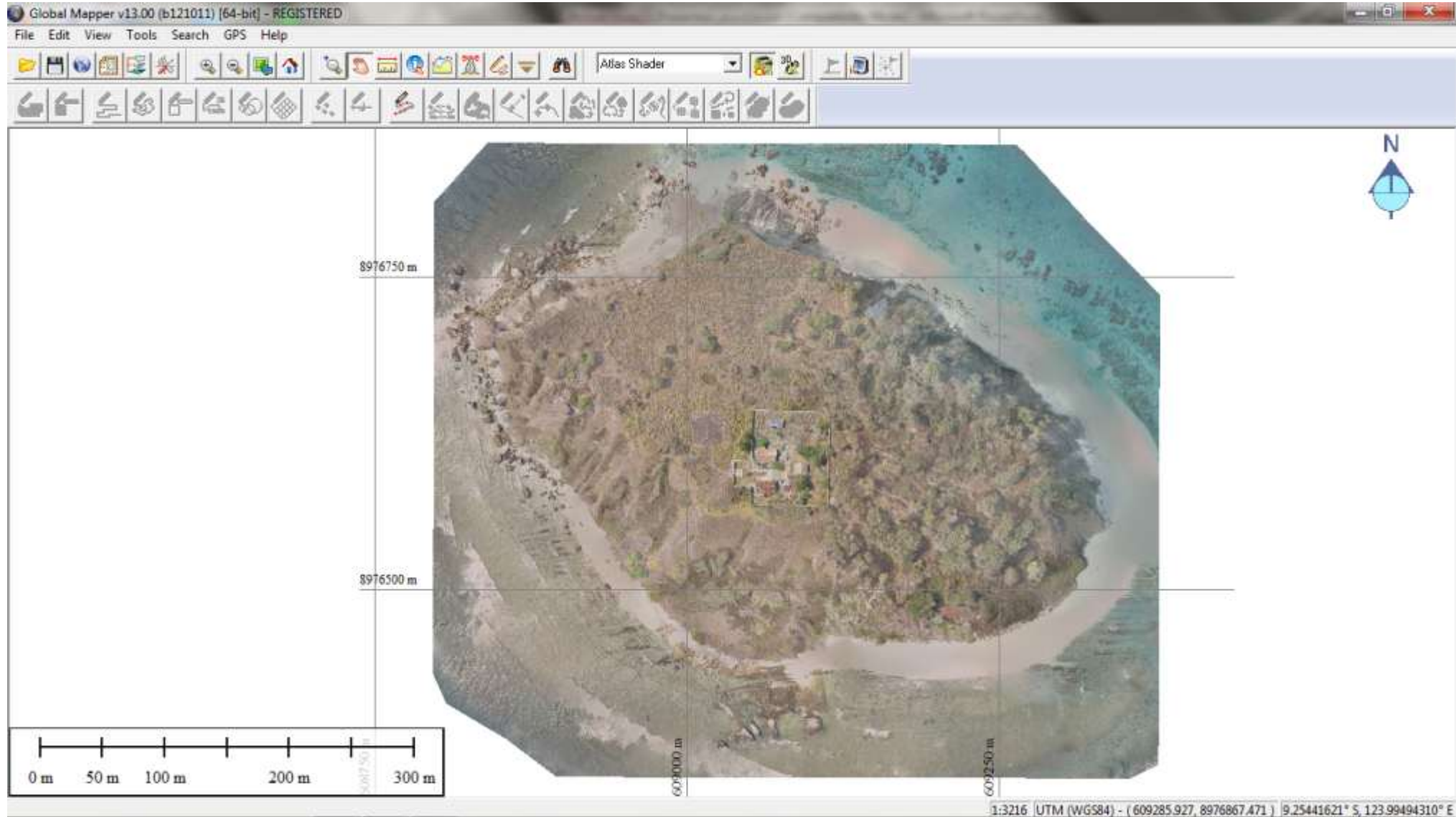
Fig. 2. GCP locations.

Label	X error (m)	Y error (m)	Z error (m)	Error (m)	Projections	Error (pix)
point 1	0.152804	-0.423105	-0.160102	0.477493	19	0.000000
point 2	-0.142317	0.276415	-0.036573	0.313045	42	0.000000
point 3	-0.438739	0.049811	0.152830	0.467258	34	0.000073
point 4	0.299132	-0.169964	-0.470204	0.582631	32	0.000000
point 5	0.129920	0.265924	0.509989	0.589647	48	0.000000

Table. 2. Control points.

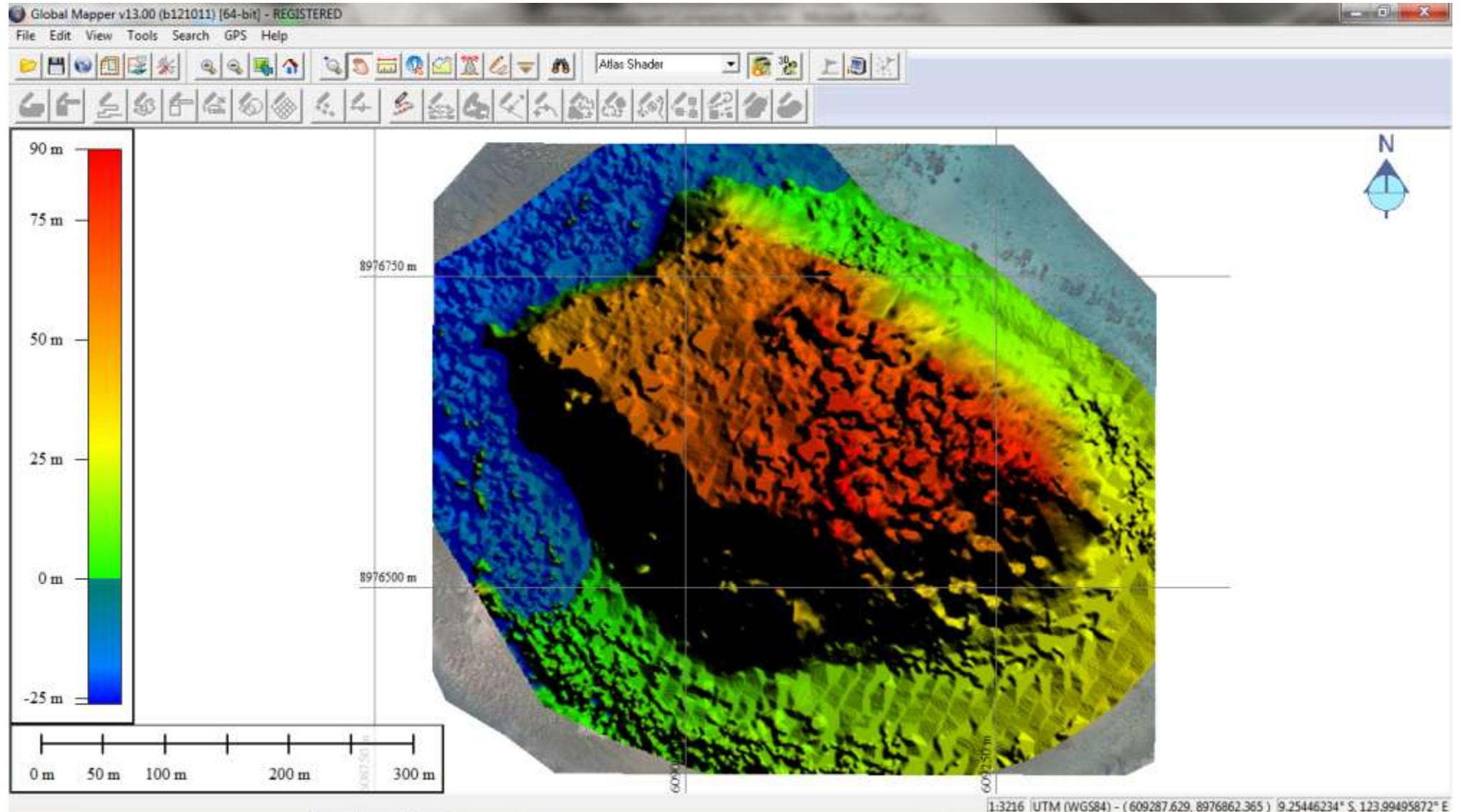
Hasil PRODUK Fotogrametri Digital

Hasil pemrosesan fotogrametri: (1) citra Ortofoto (mosaik) dan (data DEM)



Hasil PRODUK Fotogrametri Digital

Hasil pemrosesan fotogrametri: (1) citra Ortofoto (mosaik) dan (data DEM)



1:3216 UTM (WGS84) - (609287.629, 8976862.365) 9.25446234° S, 123.99495872° E

