

# Some Issue in Indonesia

## Region with Complete Natural Disaster



The screenshot shows the Geospasial website interface. At the top, there is a navigation bar with the BNPB logo and the text "GEOSPASIAL BADAN NASIONAL PENANGGULANGAN BENCANA". Below this, there is a section titled "Category Archives: Peta Risiko". The main content area displays a grid of 13 risk map entries, each with a title, a "Risk Map" link, and a "Continue reading" link. Each entry also includes a "Share / Save" button with social media icons. The entries are:

1. Earthquake Risk Map in Indonesia
2. Volcanic Eruption Risk Map in Indonesia
3. Landslide Risk Map in Indonesia
4. Land and Forest Fire Risk Map in Indonesia
6. Tsunami Risk Map in Indonesia
7. Flood Risk Map in Indonesia
8. Drought Risk Map in Indonesia
9. Extreme Weather Risk Map in Indonesia

1. Earthquake
2. Tsunami Hazard
3. Volcanic Eruption
4. Land Mass Movement
5. Flood Hazard
6. Drought Hazard
7. Forest and Land Fire
8. Erosion Hazard
9. Fire
10. Extreme Wave and Abrasion
11. Extreme Weather
12. Technological Failure
13. Epidemics and Disease Outbreaks
14. Social Conflict

### The concept:

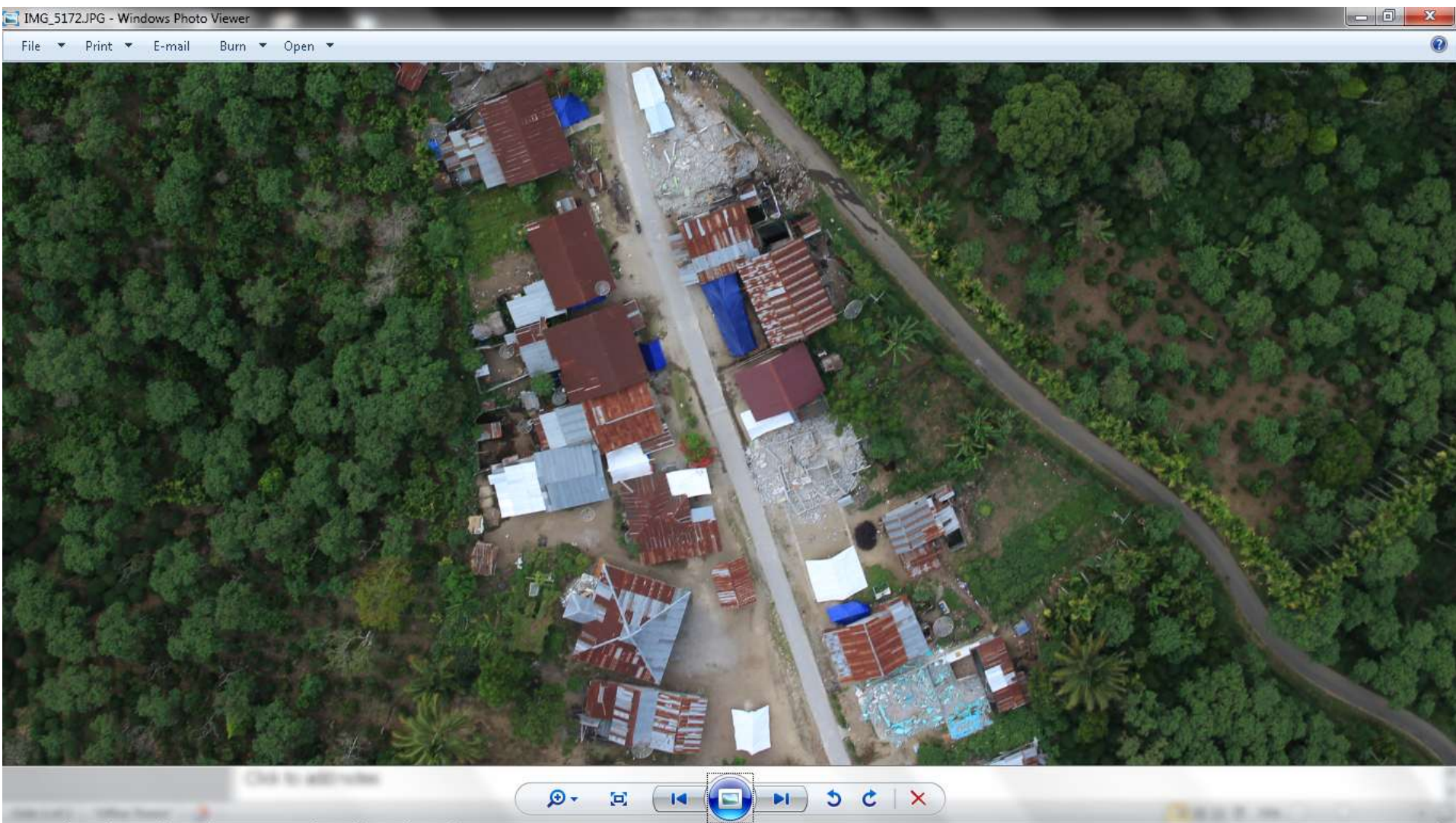
Participatory mapping or rapid mapping

Di lokasi RAWAN, perlu disiapkan tim Rapid Mapping

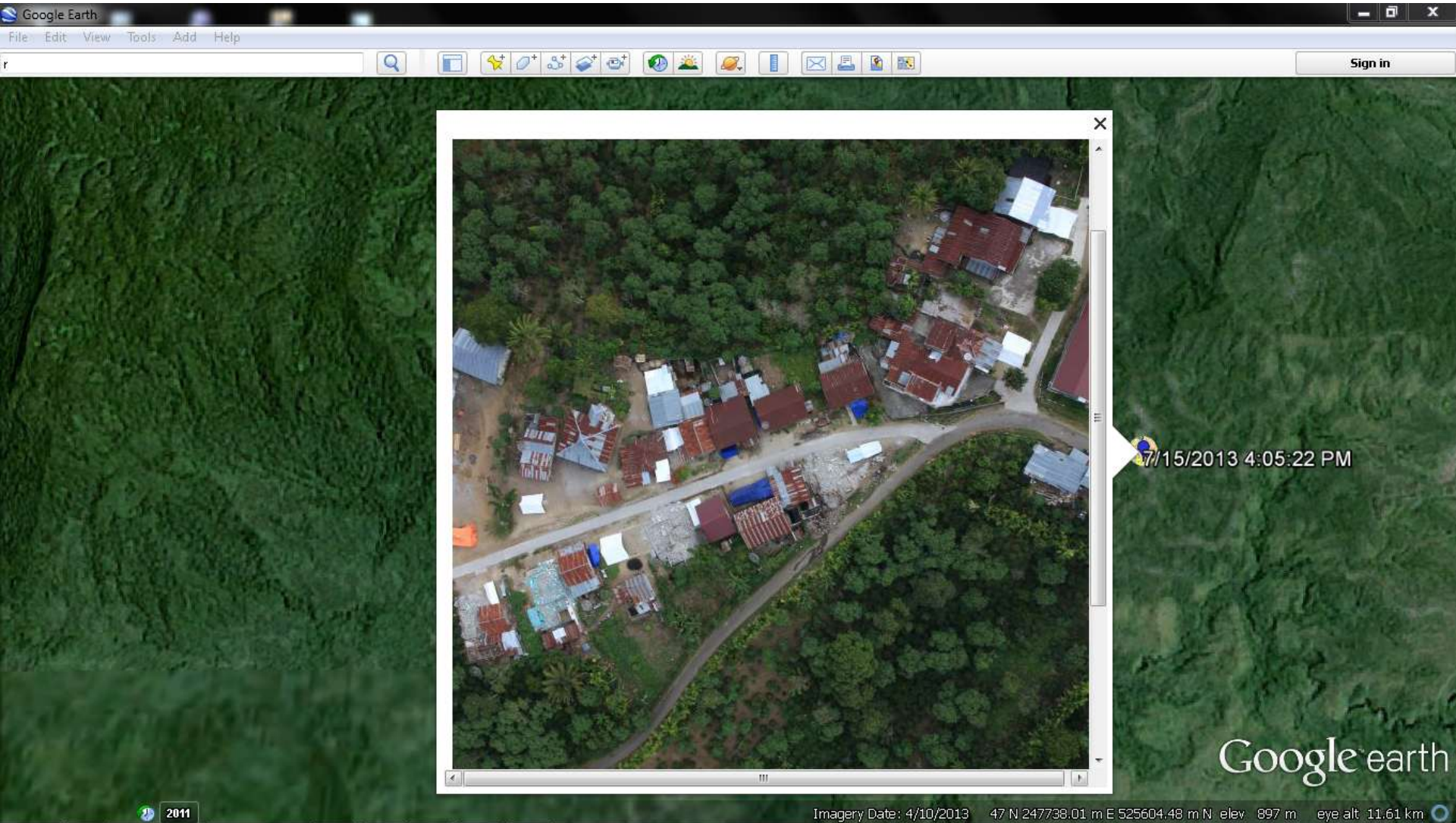
# Kebutuhan Geo-Informasi dalam Kebencanaan

<i>Tahap Manajemen</i>	<i>Kebutuhan Info. Spasial</i>	<i>Ciri Wilayah</i>
<b>Mitigasi (resiko)</b>  <b>Tidak Repetisi</b>	<b>Info. XYZ , Citra , dan ilmu kebumian lainnya</b> <b>Akurasi Tinggi</b> <b>cukup 1 epok</b>	<b>Cakupan luas</b>  <b>Atau Selected</b>
<b>Monitoring</b>  <b>Bulan - tahun</b>	<b>Info. XYZ , Citra , dan ilmu kebumian lainnya</b> <b>Akurasi Tinggi</b> <b>Periodik</b>	<b>Cakupan lokasi tertentu</b> <b>Atau Selected/ Limited Area</b>
<b>Tanggap Darurat</b>  <b>Jam - hari</b>	<b>Info. XY , Citra</b> <b>Akurasi Medium</b> <b>cukup 1 epok</b>	<b>Cakupan lokasi tertentu sesuai bentang alam</b>  <b>Melihat Perubahan</b>
<b>Rekonstruksi</b>  <b>Bulan setelah kejadian</b>	<b>Info. XYZ , point/area</b> <b>Akurasi Tinggi</b> <b>cukup 1 epok</b>	<b>Cakupan tertentu</b>  <b>Progress Perubahan</b>
<b>Rehabilitasi</b>  <b>Tahun</b> <b>Tidak Repetisi</b>	<b>Info. XYZ , Citra</b> <b>Akurasi Tinggi</b> <b>cukup 1 epok</b>	<b>Cakupan tertentu</b>

# Bencana Gempa Aceh tengah



# Divisualkan dalam google earth



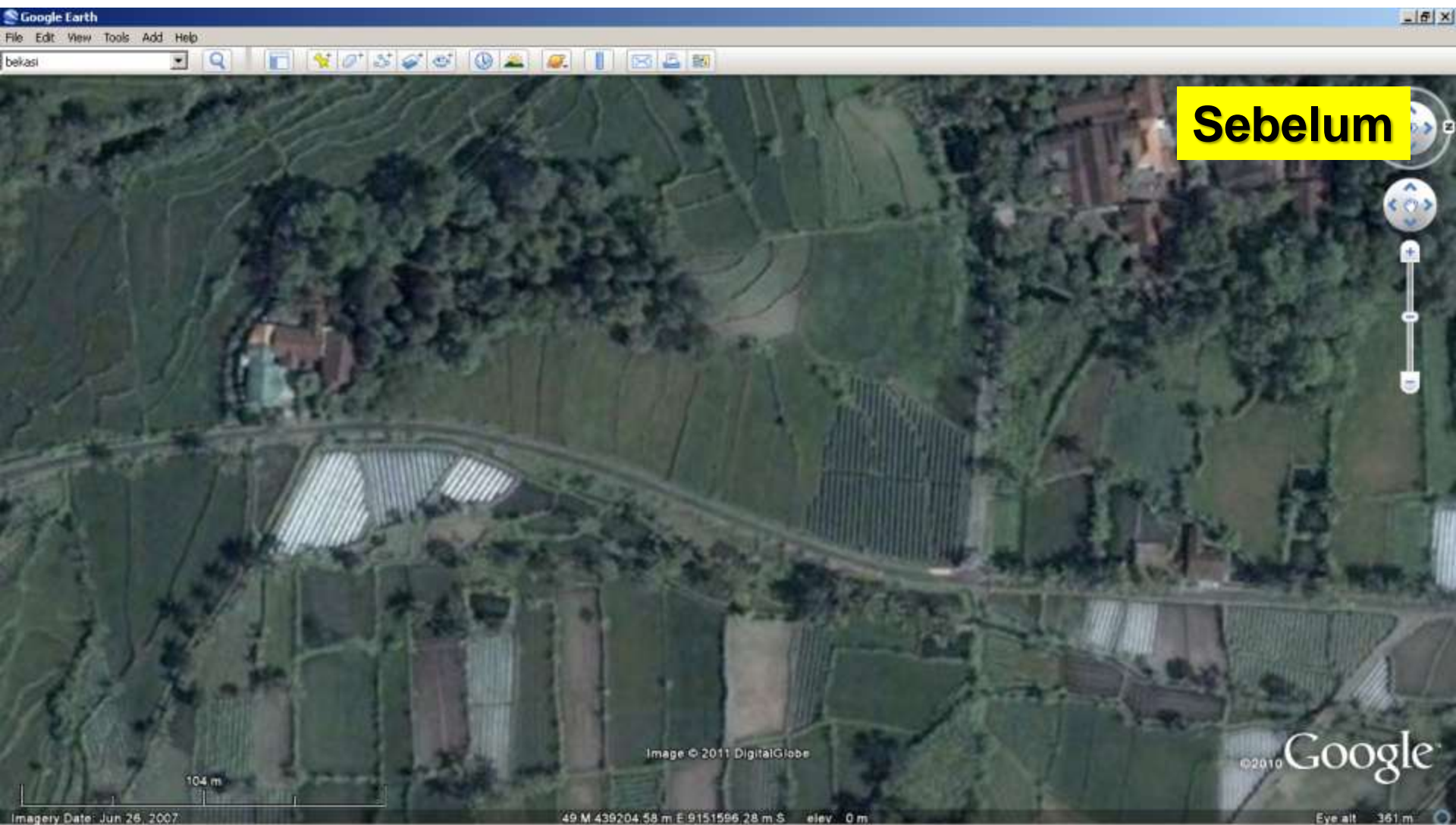
# Kali Code sebelum COLD LAVA FLOW



# Kali Code Sesudah COLD LAVA FLOW



# Kasus Hunian Sementara (UAV-Based Mapping)



# Kasus Hunian Sementara (UAV-Based Mapping)

